

Idea Development

Name: _____

1 **Generate ideas** *maximum of 50%*
Number of **words** → _____ × 1% = _____%

Number of **simple** sketches → _____ × 3% = _____%

2 **Select the best and join together ideas**
Circle the best ideas circled = 5%
Link into groups of ideas linked = 5%

3 **Print reference images**
_____ images × 5% = _____% *maximum of 10 images*

4 **Rough copy**
_____ drawing × 25% = _____% *great quality or better*

Total = _____%

NOTE: If you simply copy a picture from the internet, your mark drops to 25%.

Generate ideas!

Use lists, a web map, or simple drawings to come up with a LOT of ideas! If you already have an idea in mind, choose that as your central theme and expand upon it. Let your ideas wander - one idea leads to another. Drawings can be details of source images, different viewpoints, textures, technical experiments, etc.

Adding up points for ideas:

Number of **words**

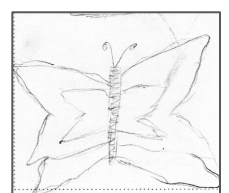
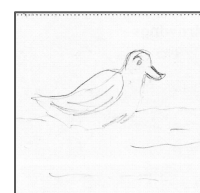
→ × 1% = %

= want something
that glows. Be it the
hair of the stars
or the background
But how do I do that?
glow pencils?

Maybe
not nature,
but still
powerful
like lightning
like

Number of **sketches**

→ × 3% = %



Select the best

Draw circles or squares around your best ideas

You have selected the best 3-7 ideas = 5%

Link the best into groups

Draw dashed or coloured lines to link your best ideas into groups that could work well together

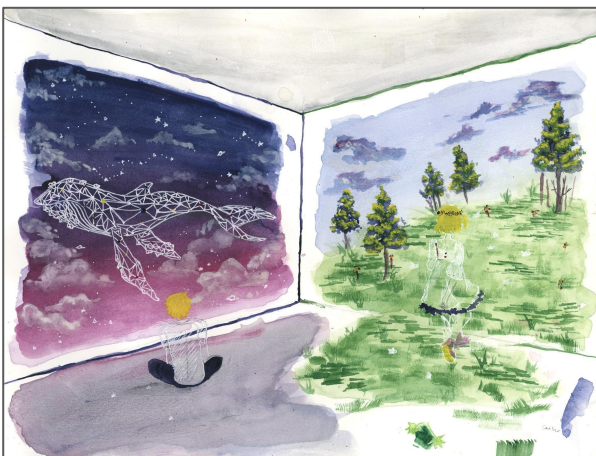
You have joined the best ideas with lines = 5%

Print references

Number of reference photos → ____ × 5% = ____%

- Print **SIX** reference images so you can accurately observe the challenging parts of your artwork. Taking your own and using own photographs is preferred, but image searches are also fine.
- **Do not simply copy a picture that you find.** The idea is to edit and combine source images to create your own artwork. If you simply copy a picture, you are plagiarizing and will earn a zero for your idea generation and any criteria involving creativity in your final artwork.
- Up to half of your pictures may be of drawings, paintings, or other artworks of others to use as inspiration. The other images must be realistic photographs.
- You must hand in the **printed** copy of the images to earn the marks.

Examples of ROUGH paintings



Rough drawing → up to 25% = ___%

- Remember to choose a non-central composition.



Rough drawing

- Take the best ideas from your thumbnails and combine them into an improved rough copy.
- Use this to work out the bugs and improve your skills before you start the real thing.
- If you are using colour, use paint or coloured pencil to show your colour scheme.
- Draw in a frame to show the outer edges of your artwork.
- ***Remember to choose a non-central composition.***